

Nikon Digital Camera COOLPIX 4300 Specifications

Type of camera: Digital camera E4300

Effective pixels: 4.0 million

CCD: 1/1.8-inch type (4.13 million total pixels)

Image size: 2272 (2,272 x 1,704 pixels), 2048 (2,048 x 1,536 pixels), 1600 (1,600 x 1,200 pixels), 1280 (1,280 x 960 pixels), 1024 (1,024 x 768 pixels), 640 (640 x 480 pixels) selectable

Lens: 3x Zoom-Nikkor; f = 8-24mm (35mm [135] camera format equivalent to 38-114mm); f/2.8-4.9; 9 elements in 8 groups

Digital zoom: 4x digital zoom

Autofocus: Contrast-detect TTL AF: 5-area Multi AF or Spot AF selectable

Focus modes: Continuous AF, Single AF, Manual Focus

Focus range: 30cm (11.8 in.) to infinity (∞) at widest zoom angle setting; 60cm (23.6 in.) at telephoto zoom angle setting; 4cm (1.6 in.) to infinity (∞) in Macro mode

Optical viewfinder: Real-image zoom optical viewfinder with LED indication
Frame coverage: approx. 80%

LCD monitor: 1.5-in., 110,000-dot, low-temp. polysilicon TFT LCD; brightness adjustment (5 steps);
Frame coverage: approx. 97%

Storage system: Exif 2.2 file (uncompressed TIFF-RGB or compressed JPEG) Design rule for camera file system (DCF), Fine: approx. 1/4; Normal: approx. 1/8; Basic: approx. 1/16; uncompressed mode TIFF-RGB, Quick Time Motion JPEG (Movie)

Media: CompactFlash™ (CF) Card Type I

Number of frames with 16MB CF Card (approx.): HI: 1, FINE: 8, NORMAL: 16, BASIC: 32

Shooting modes: Auto, SCENE, Manual, Movie

Capture modes: 1) Single, 2) Continuous, 3) Multi-Shot 16 (1/16 size), 4) VGA Sequence, 5) Ultrahigh-speed Continuous (QVGA [320 x 240]-size images; approx. 30 fps; up to 70 frames)

Movie: Up to 40 sec. QVGA (320 x 240)-size images at 15 fps

Exposure metering: 4-mode TTL metering: 1) 256-segment Matrix, 2) Spot, 3) Centre-Weighted, 4) Spot AF Area

Shutter: Mechanical and charge-coupled electronic shutter; 8 to 1/1,000 sec., and Bulb (up to 60 sec.)

Exposure control: 1) Programmed Auto, 2) Manual;
Exposure Compensation (± 2 EV in 1/3 EV steps); Auto Exposure Bracketing

Built-in Speedlight: Shooting range: approx. 0.4 - 3.7m (1.3 - 12.1 ft.) (W), approx. 0.4 - 2.3m (1.3 - 7.5 ft.) (T)

Flash modes: 1) Auto Flash, 2) Flash Cancel, 3) Red Eye Reduction, 4) Anytime Flash, 5) Night Portrait (Slow Sync. Flash)

Interface: USB

Power requirements: One Rechargeable Li-ion Battery EN-EL1 (included), one 6V 2CR5/DL245 lithium battery (optional), AC Adaptor EH-53 (optional)

Battery life: Approx. 90 min. when using LCD monitor and EN-EL1 battery at normal temperature (20°C [68°F])

Dimensions (W x H x D): 95 x 69 x 52mm (3.7 x 2.7 x 2.0 in.)

Weight: Approx. 230g (8.1 oz.) (without battery and storage media)

Supplied accessories*: Lens Cap, Hand Strap, Video Cable, 16MB CompactFlash™ Card, USB Cable UC-E1, Rechargeable Li-ion Battery EN-EL1, Battery Charger MH-53, Nikon View 5 CD-ROM
*Supplied accessories may differ by country or area

•Black body available in selected regions.

Microsoft® and Windows® are either registered trademarks or trademarks of Microsoft Corporation in the United States and/or other countries. Macintosh® and QuickTime® are either registered trademarks or trademarks of Apple Computer Inc. in the United States and/or other countries. CompactFlash™ is a trademark of SanDisk Corporation. Products and brand names are trademarks or registered trademarks of their respective companies. Images on LCDs and monitors shown in this brochure are simulated.

Specifications and equipment are subject to change without any notice or obligation on the part of the manufacturer. September 2002

©2002 NIKON CORPORATION



*Exif Print is the industrial term for Exif 2.2, which is a newly established standard for Digital Still Camera Image File Format.



WARNING

TO ENSURE CORRECT USAGE,
READ MANUALS CAREFULLY
BEFORE USING YOUR EQUIPMENT.



Nikon

NIKON CORPORATION

FUJI BLDG., 2-3, MARUNOUCHI 3-CHOME, CHIYODA-KU, TOKYO 100-8331, JAPAN

www.nikon-image.com/eng/

Printed in Japan (0209/A) Codo No. 6CE41290

En

Nikon

COOLPIX 4300

DIGITAL CAMERA



High Quality Digital To Go



3x Optical Zoom-Nikkor Lens

4.0 Effective Megapixels

5-Area Multi Autofocus

12 Scene Modes

www.nikon-coolpix.com

Take it easy.

Introducing the user-friendly, highly functional digital camera, the COOLPIX 4300. Loaded with Nikon quality, the camera boasts a superior-quality 3x Zoom-Nikkor lens, an astounding 4.0 effective megapixels and enhanced image-processing technology for crisp, brilliantly colourful images.

Getting in touch with your creative side is simple, with

Auto mode and 12 programmed Scene Modes that make each image special. And the COOLPIX 4300 allows you to rapidly transfer and share images at the touch of a button. From superb image quality and a compact, ergonomic design to extensive creative power and easy ways to keep your precious memories organised, the COOLPIX 4300 has it all — and so can you — anytime and anywhere.

**Crisp,
colourful
printouts**



**One-touch
image
upload**



**Smart,
compact
design**



COOLPIX 4300



ENJOY SUPERIOR IMAGE QUALITY



High-Quality Lens

The professional-quality 3x Zoom-Nikkor lens with a range of 38-114mm (35mm [135] equiv.) produces super-sharp images with excellent contrast and clarity. The COOLPIX 4300 lens features nine elements in eight groups and incorporates an aspherical lens element to maximise optical performance throughout the entire zoom range. And to bring subjects even closer, the 4x digital zoom is there, automatically, whenever needed.



High-Definition Images

For pictures of truly impressive quality, the COOLPIX 4300 incorporates 4.0 effective megapixels and a high-quality CCD sensor. The maximum recording image size of 2,272 x 1,704 pixels makes possible ultrahigh-definition images which can be reproduced in large-size prints of remarkable detail.

High-Fidelity Colour Reproduction

The ability of Nikon COOLPIX digital cameras to express colour in its original beauty and brilliance lies in highly advanced image processing technology. Nikon's latest advances enable the capture of an extremely broad range of tones, as well as nature's softest hues and most vibrant colours. The COOLPIX 4300 also preserves the most precise gradations and details.

With Fisheye
Converter FC-E8



Optional converters enhance
your photographic potential

High-Calibre Close-Ups

The COOLPIX 4300's macro shooting feature lets you take fabulous pictures as close as 4cm from your subject.

EXPLORE CREATIVE POSSIBILITIES



Nikon-Quality Images with a Personal Touch

The COOLPIX 4300 features Auto mode and 12 programmed Scene Modes that allow you to capture and preserve scenes the way you want them. Fully automatic AUTO mode enables point-and-shoot operation, and MANUAL mode gives you considerable creative control. An impressive array of Scene Modes makes it possible for photographers of any level to turn eye-catching scenes into truly memorable photographs.

To capture action sequences, the COOLPIX 4300 provides MOVIE mode, which allows you to create video clips of up to 40 seconds in length.



Auto



Manual



MOVIE



Portrait: Emphasises your subject with natural skin tones against a soft, pleasant background.

Party/Indoor: Preserves that special atmosphere of a get-together.

Night Portrait: Illuminates a subject in a night scene while maintaining a naturally exposed background.

Beach/Snow: Vividly captures the sparkling brightness of snow and white sand scenes.

Landscape: Captures distant scenes with postcard-sharp clarity.

Sunset: Naturally preserves the exquisite beauty of sunsets.

Night Landscape: Produces stunning night landscapes by employing slow shutter speeds.

Museum*: Produces sharp, clear indoor pictures without need for triggering the flash.

* Note: In some museums and exhibitions, it is prohibited to take pictures, even without a flash. Be sure to obtain permission before taking any pictures.

Fireworks Show: Freezes a firework display at the ideal moment with a super-responsive shutter release button.

Close Up: Presents the subject in fine detail against an artistically blurred background.

Copy: Renders clear black and white reproductions of text or drawings from a whiteboard or printed matter.

Back Light: Balances the illumination of the subject against a bright background with automatic fill-flash.

EXPERIENCE ADVANCED IMAGE CONTROL



Matrix Metering

Exceptional Exposure Metering

The COOLPIX 4300 offers four exposure metering options. Nikon's exclusive 256-segment Matrix Metering delivers optimal exposures in challenging lighting conditions. If you want more control over the exposure, select from Centre-Weighted metering, Spot metering and Spot AF Area metering, which automatically sets the optimal exposure for the selected focus area.



Spot Metering



With Noise Reduction

Extraordinary Focusing Precision

The Five-Area Multi Autofocus ensures sharp, clear pictures in just about any composition by employing an extra-wide focus range. Alternatively, you can select Manual mode for precise focus-point determination.

Excellent Noise Suppression

Noise Reduction Mode is automatically activated at slow shutter speeds. It eliminates intrusive background noise from the CCD sensor using a multiple exposure technique, enabling superior-quality long-time exposures.

Expert White Balance Determination

The COOLPIX 4300 incorporates Matrix Auto White Balance, for automatic adjustment of a scene's white balance, ensuring pleasing results both indoors and outdoors. For increased creative control, there are five manual modes: Fine, Incandescent, Fluorescent, Cloudy and Speedlight. White Balance Bracketing captures images at three different white balance settings with a single release of the shutter, helpful when shooting a scene that is lit by a mixture of light sources.

White Balance Bracketing



Reddish

Normal

Blueish

Exciting Flash Versatility

The intelligent built-in Speedlight fires automatically when ambient light is insufficient, or when shooting a backlit subject. Select from Auto Flash, Flash Cancel, Anytime Flash, Slow Sync and Red-Eye Reduction modes, and enjoy bright, colourful pictures anytime.



Five-Area Multi Autofocus



Slow Sync

TRANSFER, PRINT AND SHARE IMAGES



One-Button Review

Quick Review lets you immediately check previously captured images in quarter or full-screen size to keep or delete, even during shooting.



One Smart Feature

To allow you to quickly e-mail images to family and friends, the COOLPIX 4300 incorporates the Small Picture function, which creates a reduced-size copy of your image.



One-Touch Upload™

When you connect the COOLPIX 4300 to a computer using the supplied USB cable, Nikon View 5 viewer software is automatically activated. All you have to do is press the Transfer button, and your images are automatically uploaded to the computer.

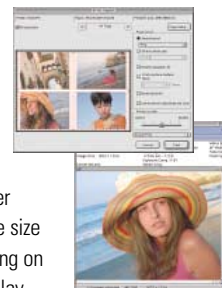


One True Standard

The COOLPIX 4300 is compatible with the new Exif Print (Exif 2.2) standard. By connecting an Exif Print-compatible printer to your computer, or by enlisting the aid of a photo lab with compatible equipment, you can enjoy prints that display the full benefit of the camera's 4.0 effective megapixels.

Nikon View 5

Nikon's versatile dedicated software (supplied) makes organising your images easy. Once you've transferred images to your computer, they appear on the computer monitor as thumbnails, for easy selection and viewing of desired images. You can also make colour and contrast adjustments necessary for images captured under less-than-ideal conditions, and change the image size to cut out an unwanted background. Home printing on your own colour printer is easy, with a choice of layouts and print sizes to meet a variety of needs.



Nikon View 5 System Requirements

Macintosh OS

Mac® OS 9.0 - 9.2 (only built-in USB ports are supported), Mac® OS X (10.1.2 or later)

Models

iMac™, iMac™ DV, Power Macintosh™ G3 (Blue/White), Power Mac™ G4 or later, iBook™, PowerBook™ G3 or later (only built-in USB ports supported)

RAM

Hard disk

64MB or more recommended
25MB required for installation, with additional free disk space of 10MB plus double the capacity of camera memory card available on start-up disk when Nikon View 5 is running
800 x 600 with 16-bit colour (full colour recommended)

Display

Others

CD-ROM drive required for installation

Windows OS

Windows® 98SE (pre-installed model), Windows® Me (pre-installed model), Windows® 2000 (pre-installed model), Windows® XP (Home & Professional)

Models

CPU

RAM

Hard disk

Only models with built-in USB ports supported
300MHz Pentium™ or higher
64MB or more recommended
25MB required for installation, with additional free disk space of 10MB plus double the capacity of camera memory card available on system disk when Nikon View 5 is running
800 x 600 with 16-bit colour (full colour recommended)

Display

Others

CD-ROM drive required for installation

Fotoshare

You can now upload your COOLPIX 4300 photos to Nikon Fotoshare®, our premier online photo community. At Nikon Fotoshare, you can share your photos online with friends and family around the world, order quality prints, read tips from the experts, and even enter competitions.

*Nikon FotoShare may not be available in some regions.



<http://www.nikonfotoshare.com>

NIKON COOLPIX 4300 ACCESSORIES

